

# LIDAR Systems

**LASER ATLANTA**<sup>®</sup>  
Measurement Systems for Professionals



## SpeedLaser<sup>®</sup> S & SpeedLaser<sup>®</sup> R

Same Great SpeedLaser Technology and Performance in either the SpeedLaser S or SpeedLaser R LIDAR units.

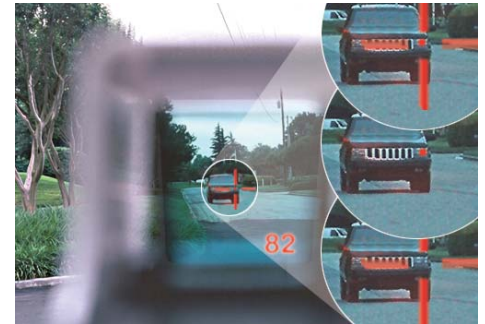
Manufactured for the Speed Measurement Experts at

**MPH**  
**INDUSTRIES**

### Leave Limitations Behind

Jammers, detectors, rainy weather and busy highways are no match for the superior performance of the SpeedLaser system. Independent testing found SpeedLaser technology best in class for:

- Readings even when vehicle uses a jammer
- Accuracy in inclement weather
- Measurement distance of oncoming or receding traffic
- Obstruction mode used when monitoring traffic through the police vehicle windshield



Head-up display options for crosshair, aiming dot or combined shows exactly which car is targeted and its speed

- IACP listed LIDAR system
- User-selectable menu language from English to Spanish, French, or Portuguese
- Simple to use, plain language menu
- Captures speed in 0.3 seconds
- Keep an eye on the road and your target with speed readings displayed in the head-up display
- Head-up display targeting options: crosshair, aiming dot or both
- PCMCIA slot for on-board data storage
- 8X Monocular Scope available
- **New:** 9 Volt Battery Handle
- **New:** Bluetooth Technology now available.
- SpeedLaser S is smaller and lighter
- SpeedLaser R has ruggedized construction and the best warranty available; even covers accidental damage\*
- Convert one model to the other (special RMA).
- **New:** Jammer Detection with type indicator
- **Obstructed Mode:** Shoot through rain, snow, windows, etc

### Citations That Stick

The head-up display with crosshair and/or aiming dot sights shows precisely which vehicle is targeted. When a car is targeted, squeeze the trigger and in 0.3 seconds a beep sounds confirming the acquisition and displaying the vehicle's speed in the head-up display and on the LCD screen, along with the distance the vehicle was from the officer. No guesswork about which car was clocked, fast measurement speeds and able to measure from long distances so the officer can pull out safely and stop the speeding vehicle - three reasons citations stick with Laser Atlanta's SpeedLaser technology.

### Independent Test-Proven Performance

In recent testing, SpeedLaser technology was proven to get speed measurements on vehicles farther away than any other system. Jammers and detectors also failed in preventing a speed reading because of Laser Atlanta's Stealth mode. And in inclement weather mode, Laser Atlanta tested best. No matter your conditions, the SpeedLaser delivers superior results.

The IACP-listed SpeedLaser solution is tested to perform under the most difficult conditions: snow/rain, stealth and obstruction modes



\* Accidental droppage does not include habitual droppage or droppage which causes damage to the housing.

### SpeedLaser® Specifications

Certifications:	International, U.S. and European standards Listed on IACP consumer products list
<b>SpeedLaser S</b>	
Dimensions:	w3.8 x h7.3 x d6.4 in (w9.6 x h18.5 x d16.2 cm)
Weight:	3.4 pounds with 9v battery (1.5kg)
<b>SpeedLaser R</b>	
Dimensions:	w4.5 x h7.5 x l8.4 in (w11.5 x h19.0 x l21.5 cm)
Weight:	4.2 pounds with 9v battery (1.9kg)
Operating temperature:	-22°F to 140°F (-30°C to 60°C)
Environmental:	Water and dust resistant IP67 & NEMA5
Head-up display:	LED aiming sights and 1 line x 4 character LED
Rear panel display:	4 line x 20 character LCD
Keyboard:	Membrane keypad
Light source:	Semiconductor pulsed laser 904nm
Laser:	FDA Class 1 eye-safe (21 CFR 1040)
Divergence:	3 mrad (30cm/100m)
Measurement time:	0.3 seconds minimum
Distance range:	Up To 7000 feet (2,133 m)
Speed range:	0mph to 200mph (0km/h to 320km/h) <i>custom settings avail</i>
Speed accuracy:	one unit of measure
Distance accuracy:	+/- 0.50 feet ( 15.2 cm) 3 sigma +/- 0.25 feet ( 7.6 cm) 1 sigma
Resolution/ Increment:	0.1 MPH or KPH
Data:	Optional memory slot for memory card/USB drive RS-232 serial port
Power source:	Rechargeable battery handles, Nickel Metal Hydride (NiMh) up to 24 hours battery life with normal use.
Recharge time:	Standard: 8-10 hours Smart charger: 2 hours for 2 battery handles

### SpeedLaser S System Description

The Laser Atlanta **SpeedLaser S** LIDAR system with **GE Lexan** ABS alloy housing incorporates head-up display sights. The **head-up display** LED shows the speed measurement and targeting sight that is user-selectable for crosshair, aiming dot or combined display.

The rear LCD screen also displays the speed measurement and indicates the distance from the target and whether the vehicle was oncoming or receding. The LCD screen presents a **plain-language system menu** in one of four user-selectable languages. Able to factory set to display speeds in either miles or kilometers.

**Specialty detection modes** include inclement weather, **Stealth**, stop-watch and **obstructed view**. Power sources include one rechargeable nickel metal hydride tripod battery handle and two battery charging cords. The LIDAR unit is covered under warranty for one year.

**Jammer Detection** Standard feature- with indicator of jammer type

### SpeedLaser R System Description

Laser Atlanta **SpeedLaser R** LIDAR system is built to be **rugged**, having a **GE Lexan** ABS alloy housing constructed with space between outer case and inner components for shock resistance. Rubber bumpers guard against damage if dropped.

The **head-up display** LED shows the speed measurement and targeting sight that is user-selectable for crosshair, aiming dot or combined display. The rear LCD screen also displays the speed measurement, indicates the distance from the target and whether the vehicle was oncoming or receding. The LCD screen presents a plain-language system menu in one of four user-selectable languages. Able to display speeds in either miles or kilometers as set in the factory.

**Specialty detection modes** include inclement weather, **Stealth**, stop-watch and **obstructed view**. Power is supplied by rechargeable nickel metal hydride battery handle with 120VAC wall and 12VDC coiled cigarette plug charging cords. Durable softside carrying case and user manual included in packages.

**Future software updates are at no charge.** The R unit includes a one-year warranty that even covers damage if unit is accidentally dropped\*!

\* Accidental Droppage - Does not include habitual dropping or droppage which causes damage to the housing.

#### Suggested Packages:

##### SpeedLaser S Base Package

Part Number: 1500  
Package Includes: SpeedLaser S, (1) NiMH Rechargeable Battery Handle, 120VAC or 90-250V Battery Charger, 10' Coiled Power Cord, Soft Carrying Case, 1 Year Warranty and Users Manual

##### SpeedLaser R Base Package

Part Number: 1R00  
Package Includes: SpeedLaser R, (1) NiMH Rechargeable Battery Handle, 120VAC or 90-250V Battery Charger, 10' Coiled Power Cord, Soft Carrying Case, 1 Year Warranty and Users Manual

#### Options & Accessories

##### Battery Handle - Rechargeable

Part Number: 5HT0

##### 9V Battery Handle

Part Number: 5H90

##### 10' Coiled Power Cord

Part Number: 5BMO

##### 8x Monocular Scope

Part Number: Speed R - 5MR0, Speed S - 5MS0

##### Smart Charging Battery Station

Part Number: 5CS0 Office or patrol vehicle use.

##### Hardshell Case

Part Number: 5PP0

##### Annual Calibration Certification

Part Number: SOAS

##### Extra 1-Year Warranty

Part Number: PEAW

##### Add BLUETOOTH

Part Number: ASB0

##### Video Camera Installation Option

Part Number: 5RV0

#### Custom configurations available

#### Call for information

#### Advantage™ Mapping Available

## For a Demonstration

### Contact:



316 E 9th Street

Owensboro, KY 42303

Toll Free (888) 689-9222

Fax (270)-685-6288

E-mail: [info@mphindustries.com](mailto:info@mphindustries.com)

Website: [www.mphindustries.com](http://www.mphindustries.com)